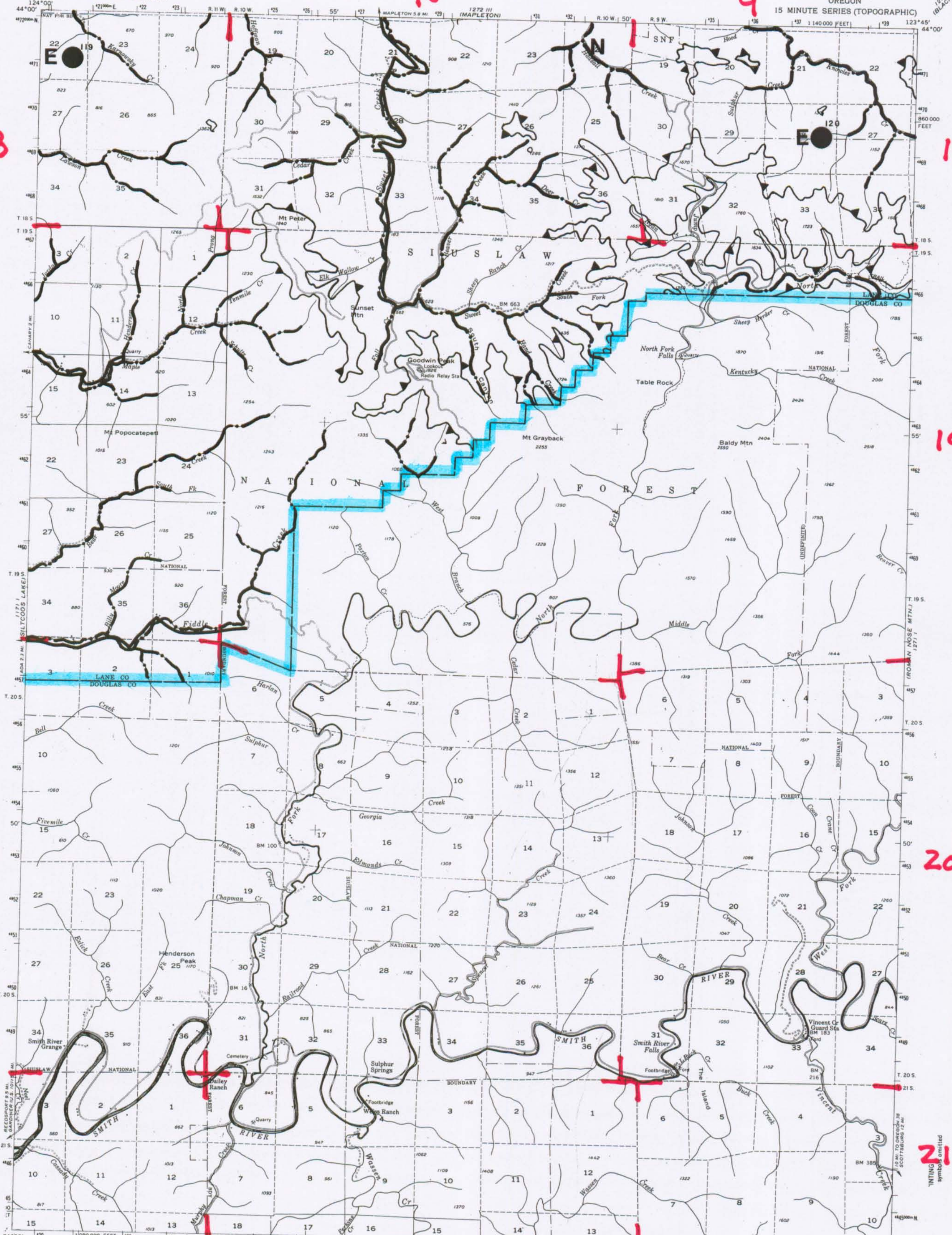


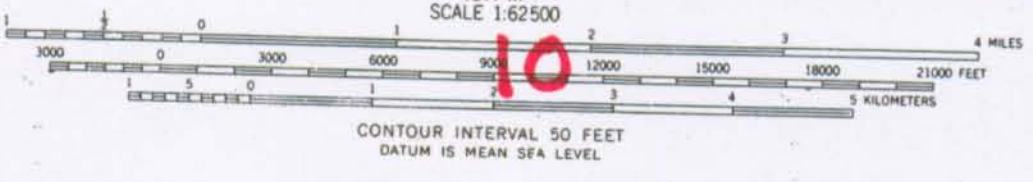
# WILDLIFE HABITAT MAY 1980

UNITED STATES  
DEPARTMENT OF THE INTERIOR  
GEOLOGICAL SURVEY

GOODWIN PEAK QUADRANGLE  
OREGON  
15 MINUTE SERIES (TOPOGRAPHIC)



Mapped, edited, and published by the Geological Survey  
Control by USGS and USC&G  
Topography by planetable surveys, 1918, 1919, and 1938  
Culture revised from aerial photographs taken 1955  
Field check 1956  
Polyconic projection. 1927 North American datum  
10,000-foot grid based on Oregon coordinate system,  
south zone  
1000-meter Universal Transverse Mercator grid ticks,  
zone 10, shown in blue  
Where omitted, land lines have not been established  
or are not shown because of insufficient data



ROAD CLASSIFICATION  
Medium-duty  
Light-duty  
Unimproved dirt

THIS MAP COMPLIES WITH NATIONAL MAP ACCURACY STANDARDS  
FOR SALE BY U.S. GEOLOGICAL SURVEY, DENVER, COLORADO 80225, OR WASHINGTON, D.C. 20242  
A FOLDER DESCRIBING TOPOGRAPHIC MAPS AND SYMBOLS IS AVAILABLE ON REQUEST

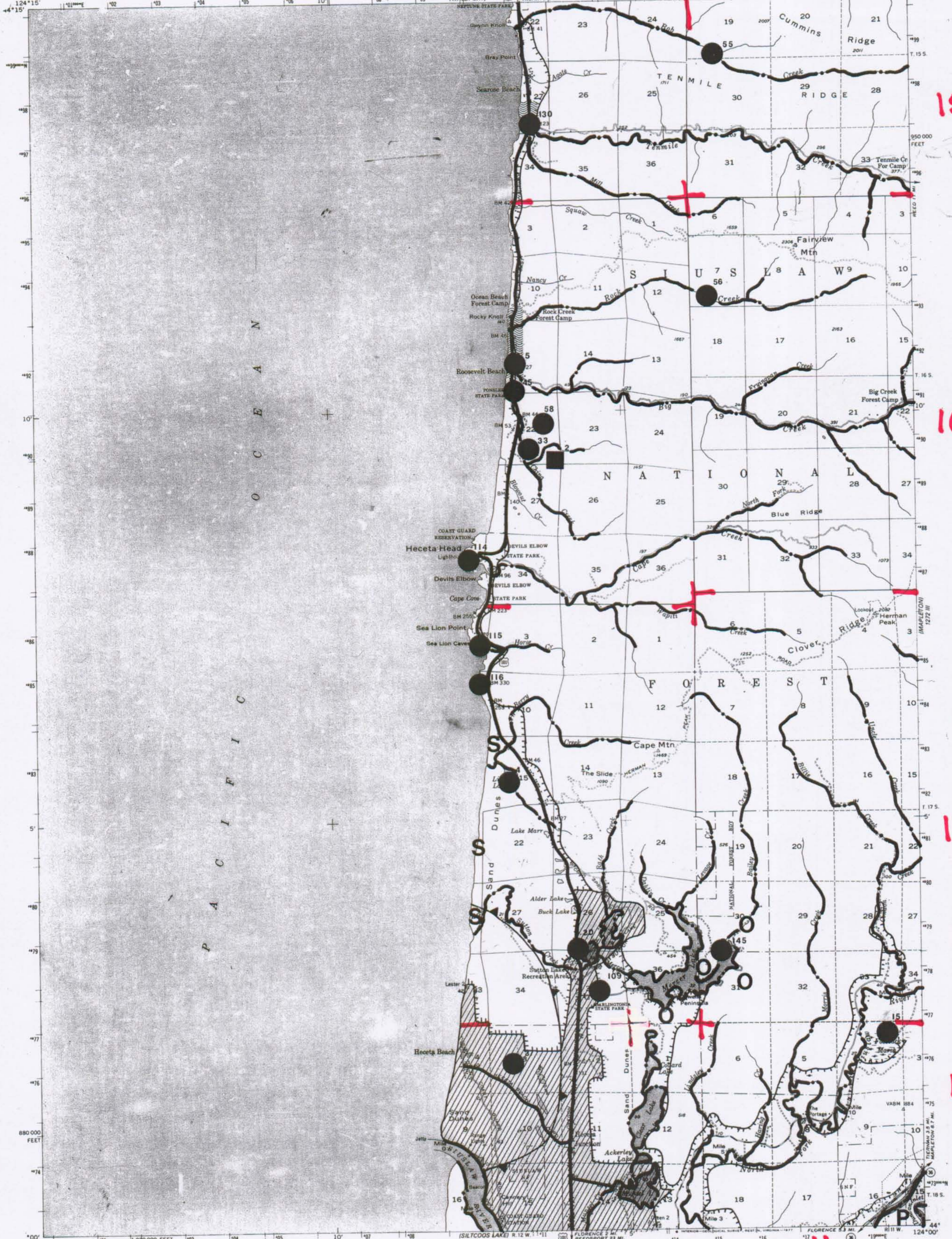
GOODWIN PEAK, OREG.  
N4345-W12345/15

1956  
MINOR CORRECTIONS MADE 1965  
AMS 1271 IV-SERIES V792

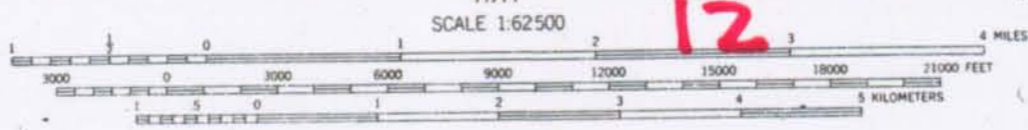
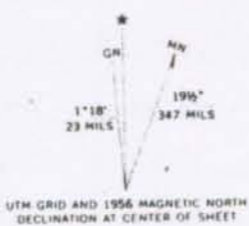
# WILDLIFE HABITAT MAY 1980

HECETA HEAD QUADRANGLE  
OREGON, CLATSOP CO.  
15 MINUTE SERIES (TOPOGRAPHIC)

UNITED STATES  
DEPARTMENT OF THE INTERIOR  
GEOLOGICAL SURVEY



Mapped, edited, and published by the Geological Survey  
Control by USGS and USC&GS  
Mapped 1918, remapped 1956  
Topography from aerial photographs by multiplex methods  
Aerial photographs taken 1954. Field check 1956  
Polyconic projection. 1927 North American datum  
10,000-foot grid based on Oregon coordinate system,  
south zone  
1000-meter Universal Transverse Mercator grid ticks,  
zone 10, shown in blue  
Dashed land lines indicate approximate locations  
National Forest shown by proclamation boundary  
Private ownership not shown within National Forest



CONTOUR INTERVAL 80 FEET  
NATIONAL GEODETIC VERTICAL DATUM OF 1929  
SHORELINE SHOWN REPRESENTS THE APPROXIMATE LINE OF NEAR HIGH WATER  
THE MEAN RANGE OF TIDE IS APPROXIMATELY 5 FEET  
THIS MAP COMPLIES WITH NATIONAL MAP ACCURACY STANDARDS  
FOR SALE BY U.S. GEOLOGICAL SURVEY, DENVER, COLORADO 80225, OR RESTON, VIRGINIA 22092  
A FOLDER DESCRIBING TOPOGRAPHIC MAPS AND SYMBOLS IS AVAILABLE ON REQUEST



ROAD CLASSIFICATION  
Medium duty — Light-duty  
Unimproved dirt  
U. S. Route — State Route

HECETA HEAD, OREG.  
N4400-W12400/15

1956

AMS 1172 II—SERIES V792

MAPLETON

# WILDLIFE HABITAT MAY 1980

UNITED STATES  
DEPARTMENT OF THE INTERIOR  
GEOLOGICAL SURVEY

MAPLETON QUADRANGLE  
OREGON-LANE CO.  
15 MINUTE SERIES (TOPOGRAPHIC)

10

9

15

15

16

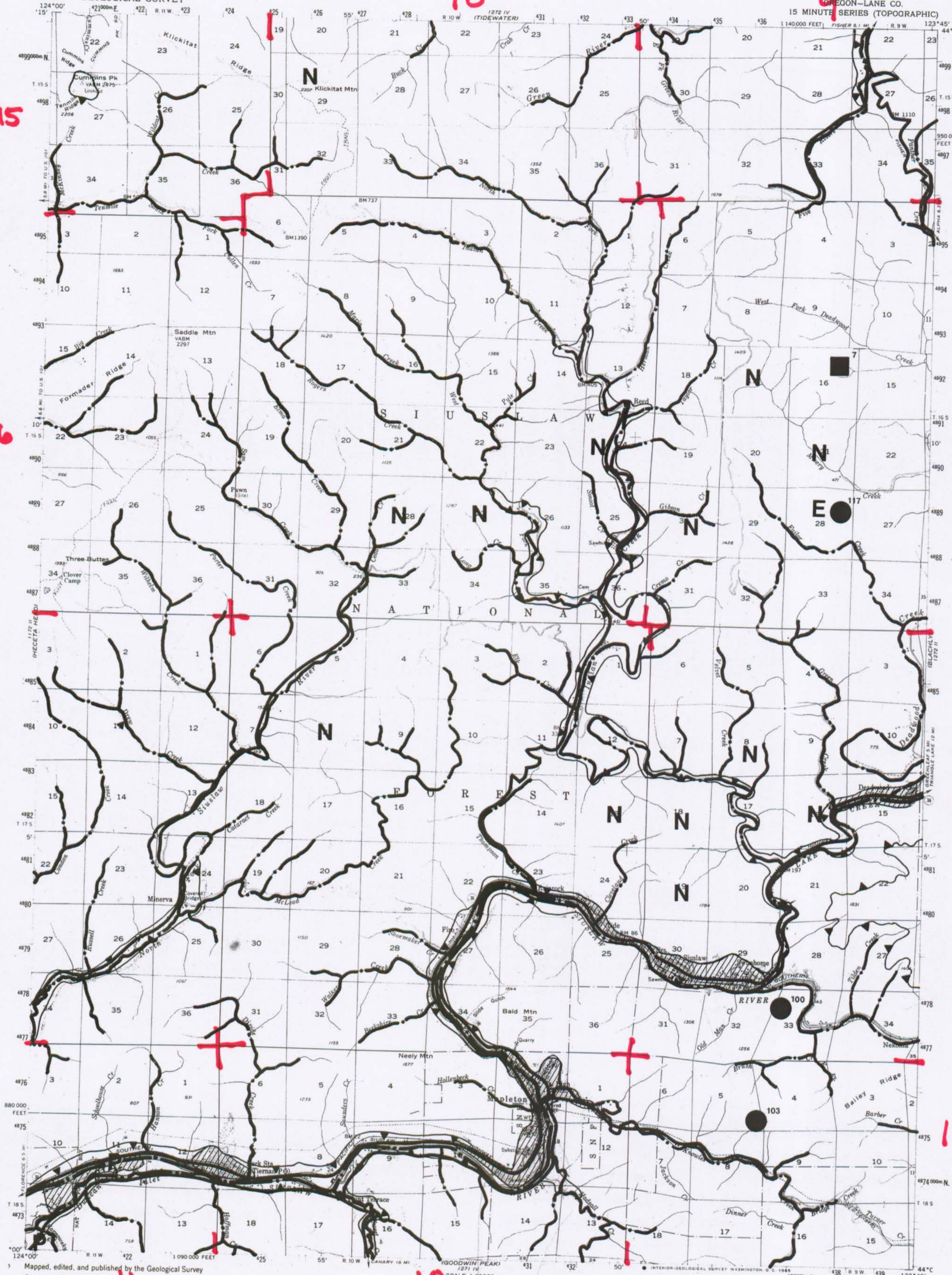
16

17

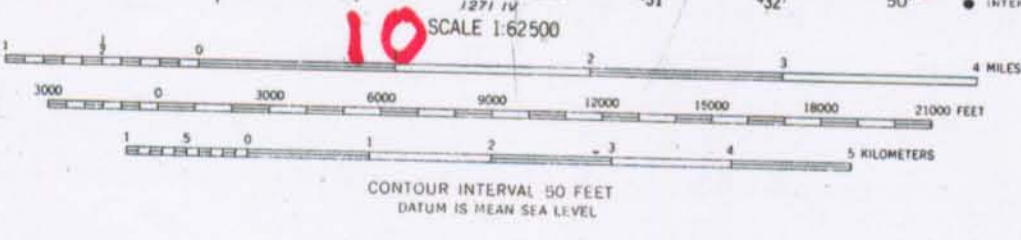
17

18

18



Mapped, edited, and published by the Geological Survey  
Control by USGS and USC&GS  
Topography by planetable surveys of 1919 and 1937  
Culture revised from aerial photographs taken 1951 and 1952  
Field check 1957  
Polyconic projection. 1927 North American datum  
10,000-foot grid based on Oregon coordinate system,  
south zone  
1000-meter Universal Transverse Mercator grid ticks  
zone 10, shown in blue



ROAD CLASSIFICATION  
Medium-duty  
Light-duty  
Unimproved dirt  
State Route

MAPLETON, OREG.  
N4400-W12345/15

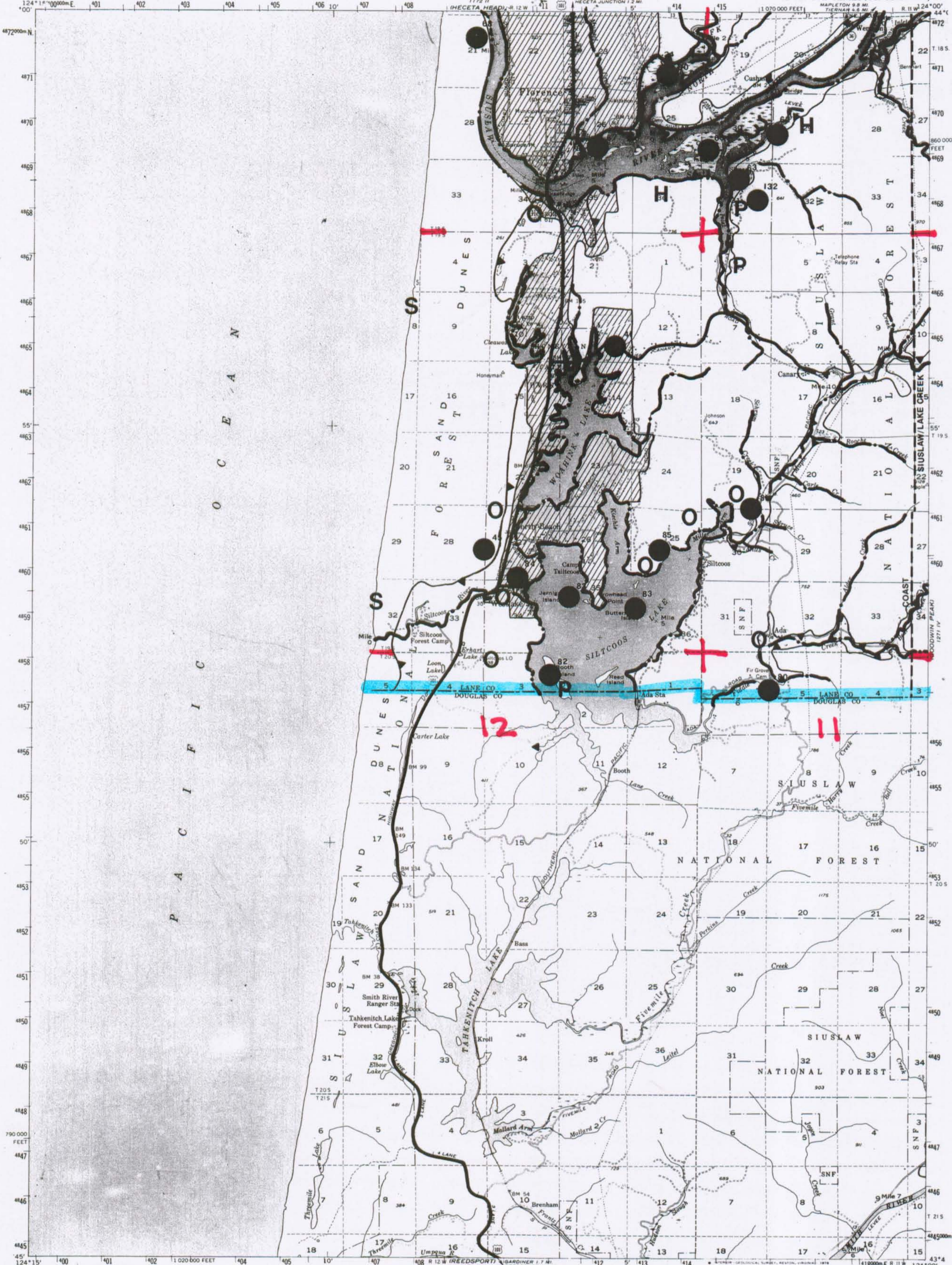
FOR SALE BY U. S. GEOLOGICAL SURVEY, DENVER, COLORADO 80225 OR WASHINGTON, D. C. 20242  
A FOLDER DESCRIBING TOPOGRAPHIC MAPS AND SYMBOLS IS AVAILABLE ON REQUEST

1957  
AMS 1272 III-SERIES V792

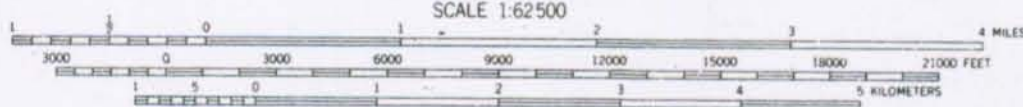
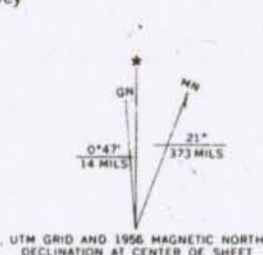
# WILDLIFE HABITAT MAY 1980

UNITED STATES  
DEPARTMENT OF THE INTERIOR  
GEOLOGICAL SURVEY

SILTCOOS LAKE QUADRANGLE  
OREGON  
15 MINUTE SERIES (TOPOGRAPHIC)



Mapped, edited, and published by the Geological Survey  
Control by USGS and USC&GS  
Mapped 1918, remapped 1956  
Topography from aerial photographs by multiplex methods  
Aerial photographs taken 1954. Field check 1956  
Polyconic projection. 1927 North American datum  
10,000 foot grid based on Oregon coordinate system,  
south zone  
1000 meter Universal Transverse Mercator grid ticks,  
zone 10, shown in blue  
Red tint indicates areas in which only  
landmark buildings are shown  
Dashed land lines indicate approximate locations



CONTOUR INTERVAL 80 FEET  
NATIONAL GEODETIC VERTICAL DATUM OF 1929  
SHORELINE SHOWN REPRESENTS THE APPROXIMATE LINE OF MEAN HIGH WATER  
THE MEAN RANGE OF TIDE IS APPROXIMATELY 5 FEET  
THIS MAP COMPLIES WITH NATIONAL MAP ACCURACY STANDARDS  
FOR SALE BY U.S. GEOLOGICAL SURVEY, DENVER, COLORADO 80225, OR RESTON, VIRGINIA 22092  
A FOLDER DESCRIBING TOPOGRAPHIC MAPS AND SYMBOLS IS AVAILABLE ON REQUEST

ROAD CLASSIFICATION

|             |                 |
|-------------|-----------------|
| Heavy-duty  | Light-duty      |
| Medium-duty | Unimproved dirt |
| U.S. Route  | State Route     |



**SILTCOOS LAKE, OREG**  
N4345-W12400/15

1956

AMS 1171 I-SERIES V792